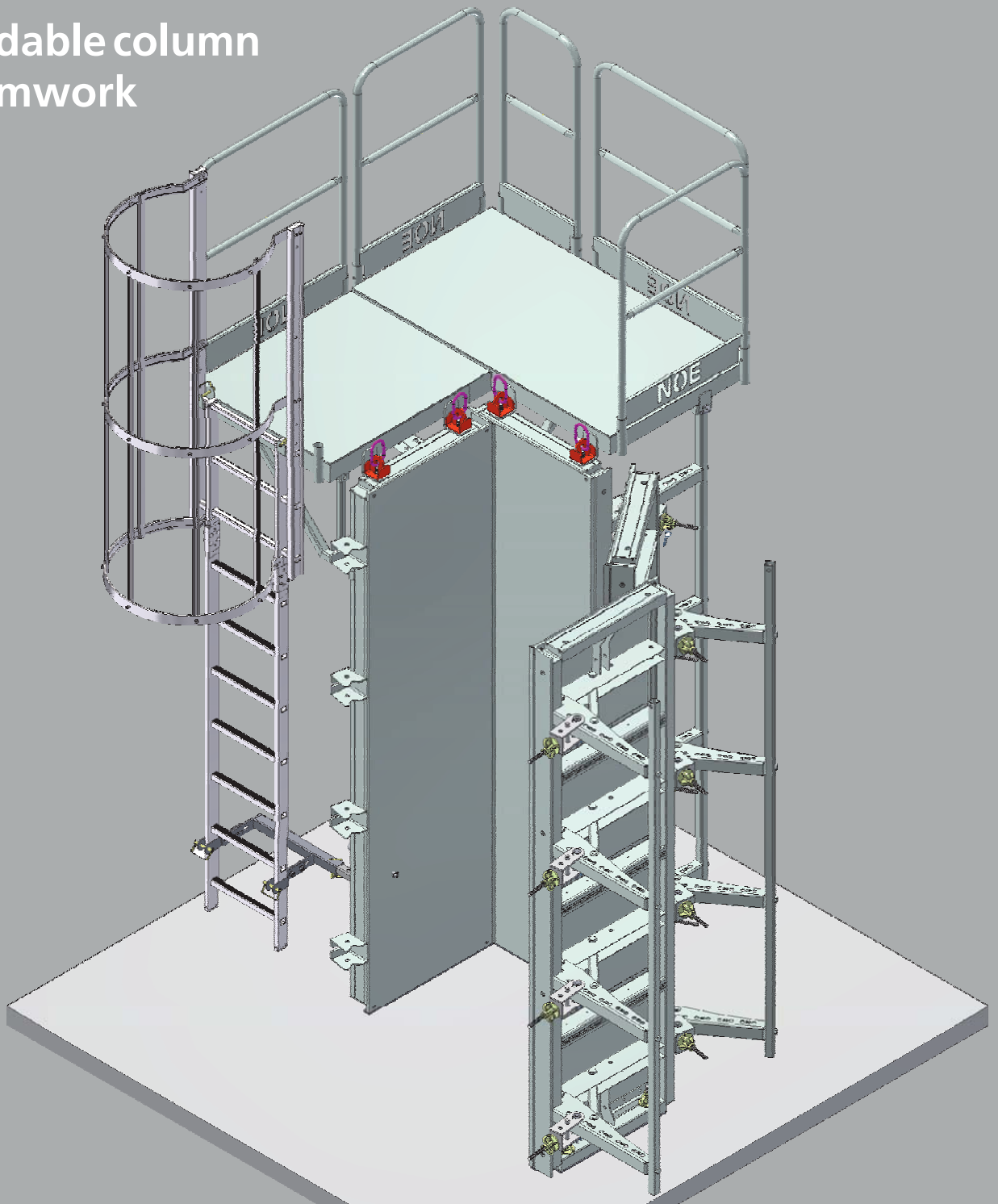




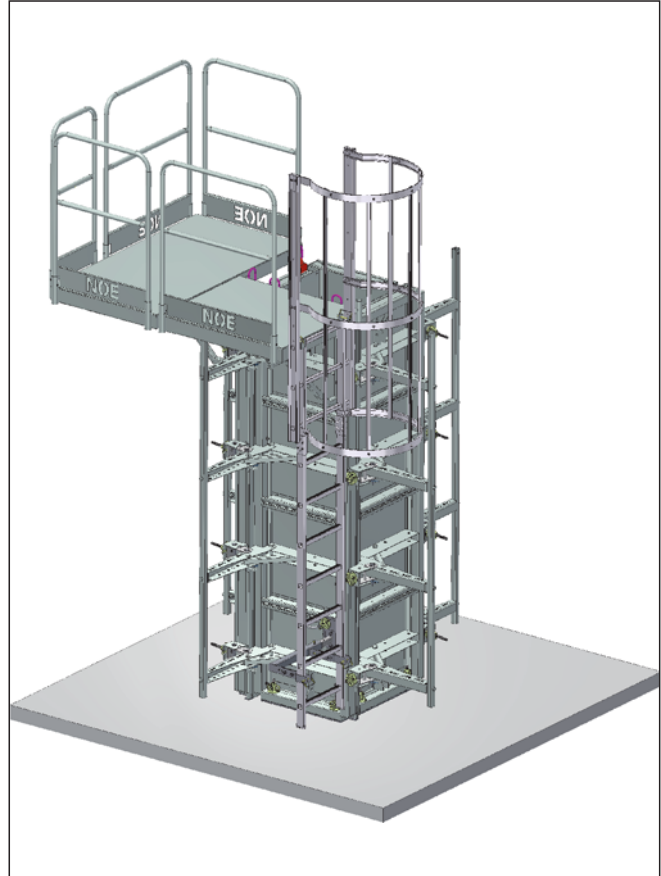
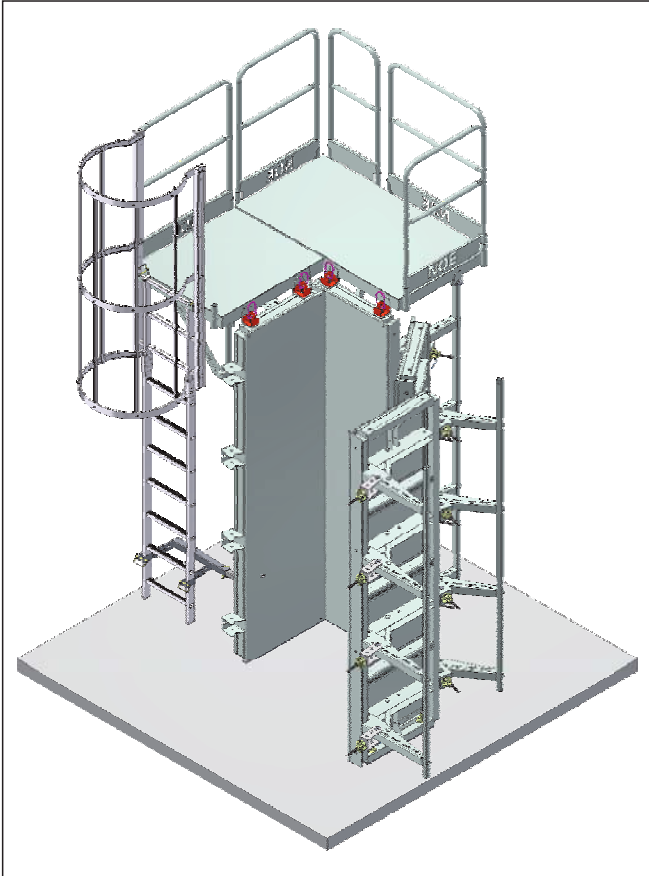
THE FORMWORK

# NOE<sup>®</sup> top FS

Foldable column  
formwork



# NOEtop FS – Foldable column formwork



The NOEtop FS allows columns with cross sections from 200 to 600 mm to be concreted without tie rods. The cross sectional dimensions are adjustable in 50 mm increments.

Available in two versions  
– With steel facing, or as a  
– Supporting frame for any type of 21 mm thick facing.

Erection and stripping is done in one piece, i.e. the formwork does not have to be assembled or disassembled. Moving from one place to another is also done in one piece. Safety is built in with working platforms and ladder access including integrated safety cage.

## Your advantage:

- **Column cross sectional dimensions from 200 up to 600 mm**
- **50 mm increments**
- **Column heights 3500; 2750; 1250; 600 mm**
- **Available**
  - **With steel formwork facing for special-purpose concrete**
  - **As a supporting frame for any type of 21 mm thick facing for fair-faced concrete columns**
- **Durable, completely galvanised system**

**NOE-Schaltechnik  
Georg Meyer-Keller  
GmbH + Co. KG**

Kuntzestr. 72, 73079 Suessen, Germany  
T + 49 7162 13-1  
F + 49 7162 13-288  
info@noe.de  
www.noe.de  
www.noeplast.com