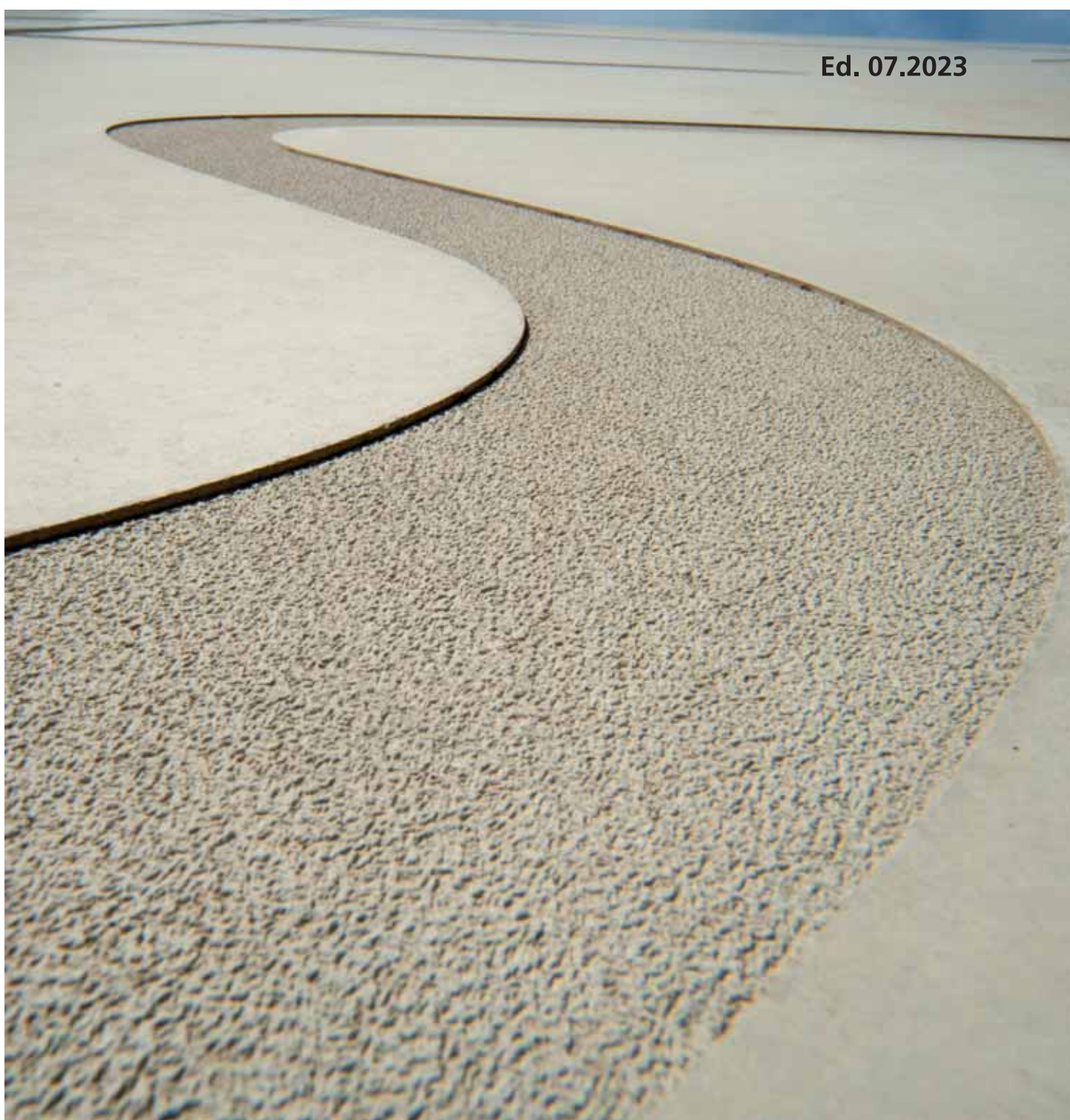




# **NOE<sup>®</sup>liner**

Large-size textured formliners

Ed. 07.2023



# NOEliner – more beautiful and safer concrete



For over fifty years, NOE-Schaltechnik has been a leading provider of textured formliners for forming and profiling concrete surfaces.

Some of these textured formliners were developed specifically for creating antislip walking surfaces on balconies, stairs, landings and in arcades.

## The NOEliner product range is precisely tailored for these applications.

NOEliner textured formliners are manufactured out of hard-wearing PVC and have a fabric backing. As a result, they bond very well when glued to flat, even surfaces. Another advantage is their very low thickness – approximately 2.0 mm.

### Available profile structures:

- NOEliner Lattice fabric
- NOEliner Pyramid
- NOEliner Block large
- NOEliner Block small
- NOEliner Rhombus large
- NOEliner Rhombus small
- NOEliner Sand
- NOEliner Matt (slightly roughened surface R10)

### When a seamless smooth concrete surface is required:

- NOEliner Smooth
- NOEliner Matt

### Available dimensions:

NOEliner is supplied on a roll of 50 metres in widths of 2,000 mm or 3,000 mm.

(The profile structure Block large and the NOEliner Smooth and Matt are only available in width 3,000 mm).

However, lengths shorter than 50 meters are also possible. For cutting to length and repacking we charge order costs, which will be communicated in advance.

### Reuse potential

NOEliner can be used up to 20 times. However, this strongly depends on the type of bonding.

### Samples

NOE will gladly send you a NOEliner sample in A4 format. A larger standard format 1.000 x 3.000 mm can be sent for a small fee.

### For any further questions we remain at your disposal.

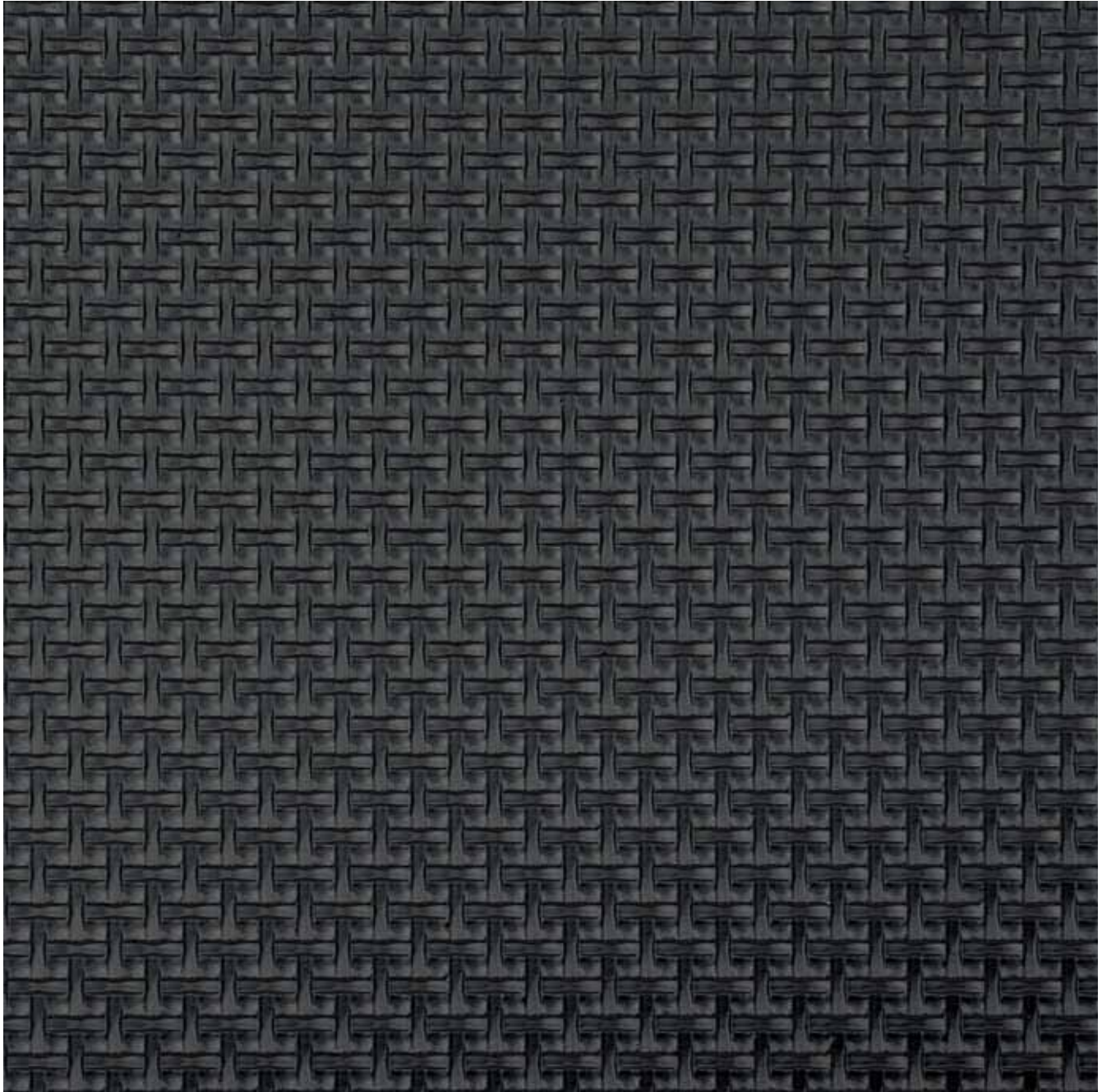
NOE Betongestaltung GmbH  
Kuntzestr. 72  
73079 Süssen  
T + 49 7162 13-1  
noeplast@noe.de  
www.noe.eu



# 579559 NOEliner Lattice fabric



Antislip in accordance with DIN 51130 R 11

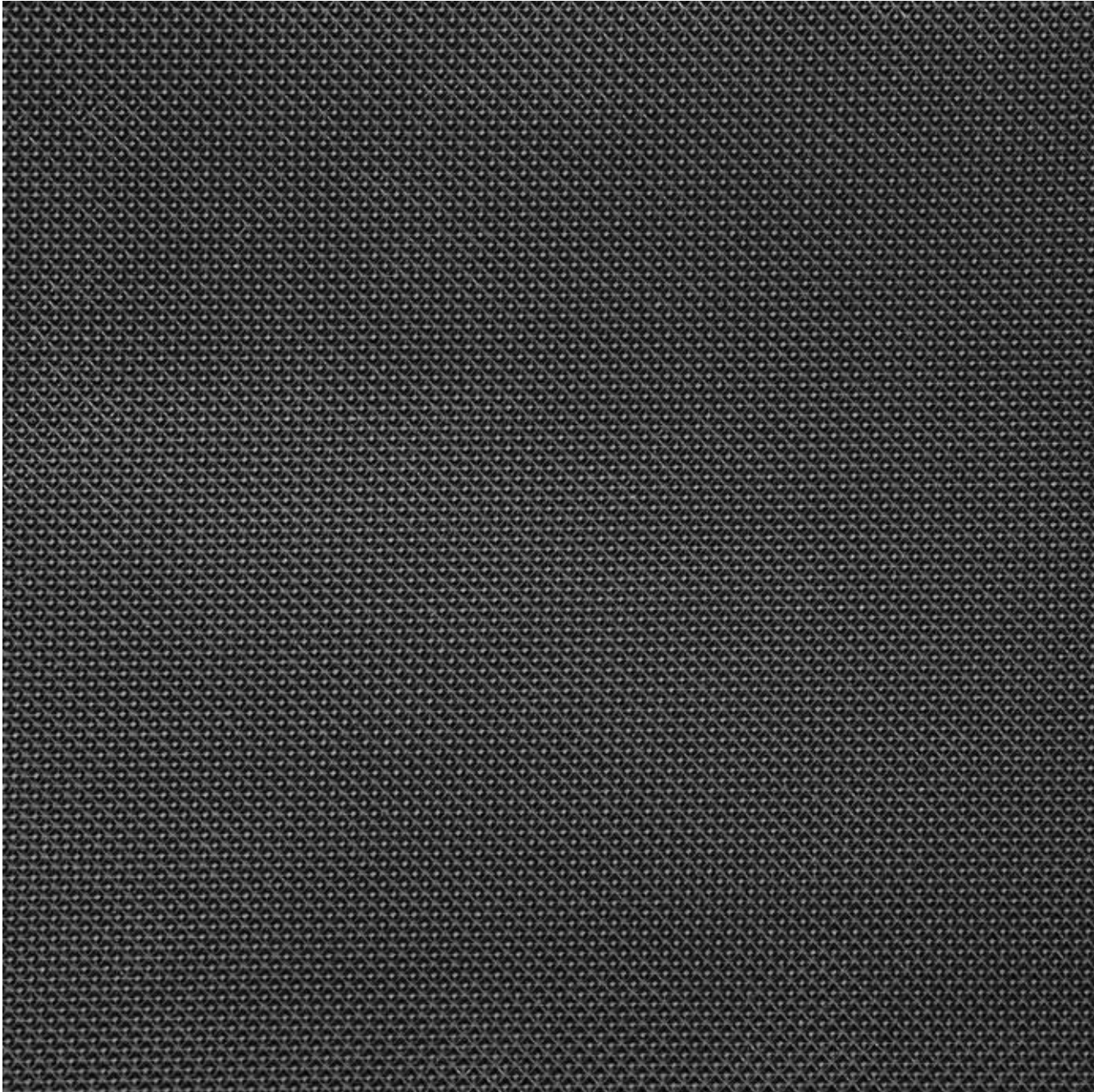


Matt sizes		
Width	mm	2.000 / 3.000
Length	mm	up to 50.000
Mat thickness	ca. mm	2
Tolerances		+ ca. 1 %
Weight	ca. kg/m <sup>2</sup>	1,5
Shore hardness A		70
Temperature resistance	°C	0-60
Supplied as		Rolls
Cut sizes		adjustable in length

# 579539 NOEliner Pyramid



Antislip in accordance with DIN 51130 R12

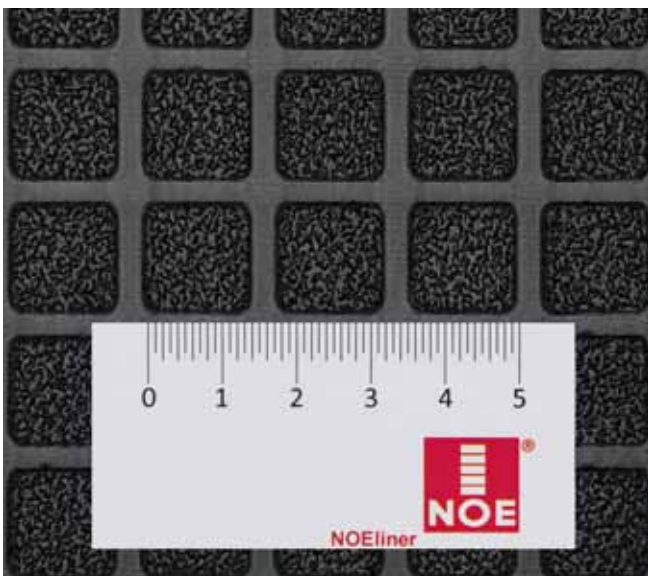
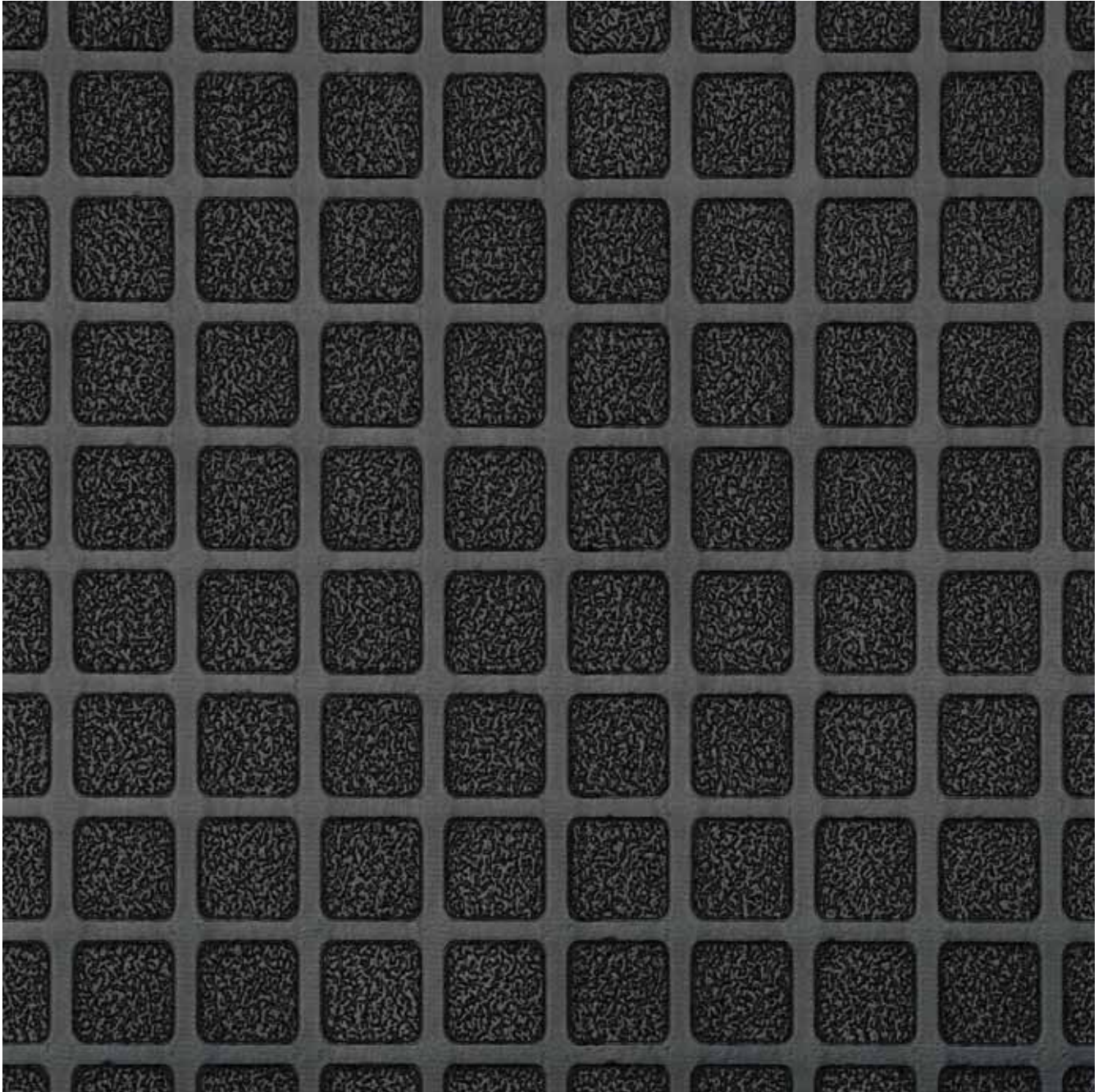


Mat sizes		
Width	mm	2.000 / 3.000
Lenght	mm	up to 50.000
Mat thickness	ca. mm	2
Tolerances		+ ca. 1 %
Weight	ca. kg/m <sup>2</sup>	1,5
Shore hardness A		70
Temperature resistance	°C	0-60
Supplied as		Rolls
Cut sizes		adjustable in length

# 579563 NOEliner Block large



Antislip in accordance with DIN 51130 R 13

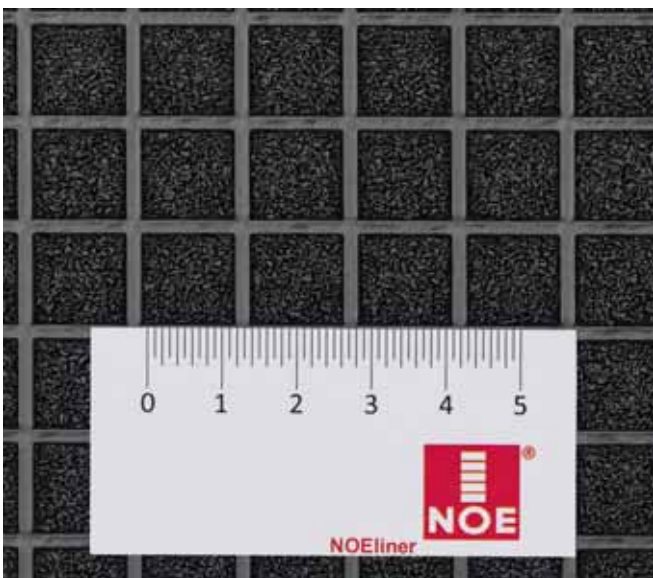
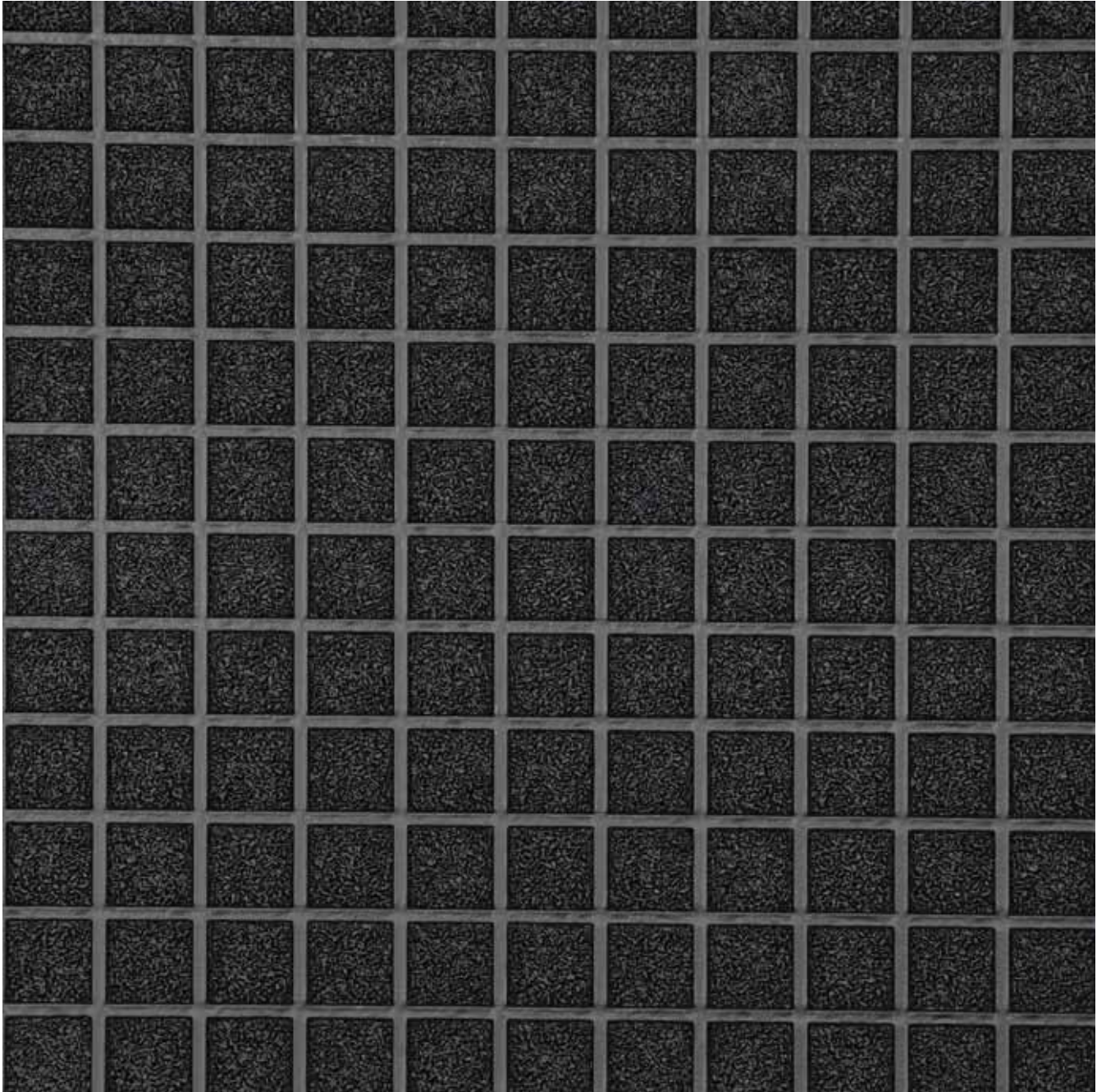


Matt sizes		
Width	mm	3.000
Length	mm	up to 50.000
Mat thickness	ca. mm	2
Tolerances		+ ca. 1 %
Weight	ca. kg/m <sup>2</sup>	1,5
Shore hardness A		70
Temperature resistance	°C	0-60
Supplied as		Rolls
Cut sizes		adjustable in length

# 579562 NOEliner Block small



Antislip in accordance with DIN 51130 R 13

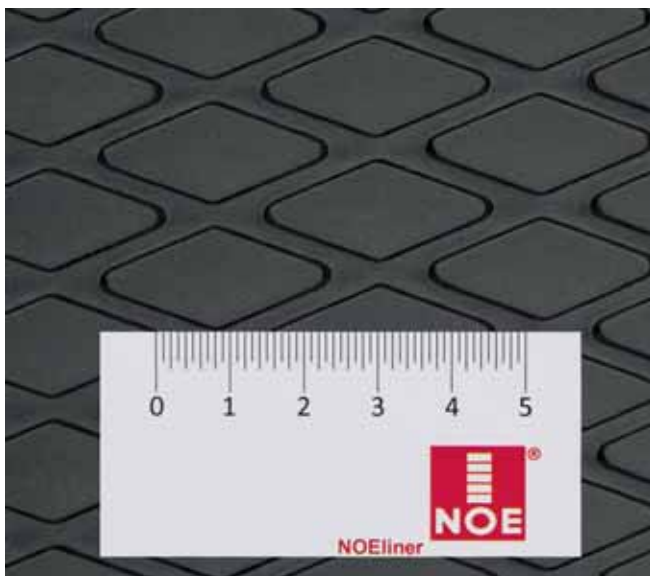


Matt sizes		
Width	mm	2.000 / 3.000
Length	mm	up to 50.000
Mat thickness	ca. mm	2
Tolerances		+ ca. 1 %
Weight	ca. kg/m <sup>2</sup>	1,5
Shore hardness A		70
Temperature resistance	°C	0–60
Supplied as		Rolls
Cut sizes		adjustable in length

# 579550 NOEliner Rhombus large



Dynamic coefficient of friction ( $\mu$ ): 0.65

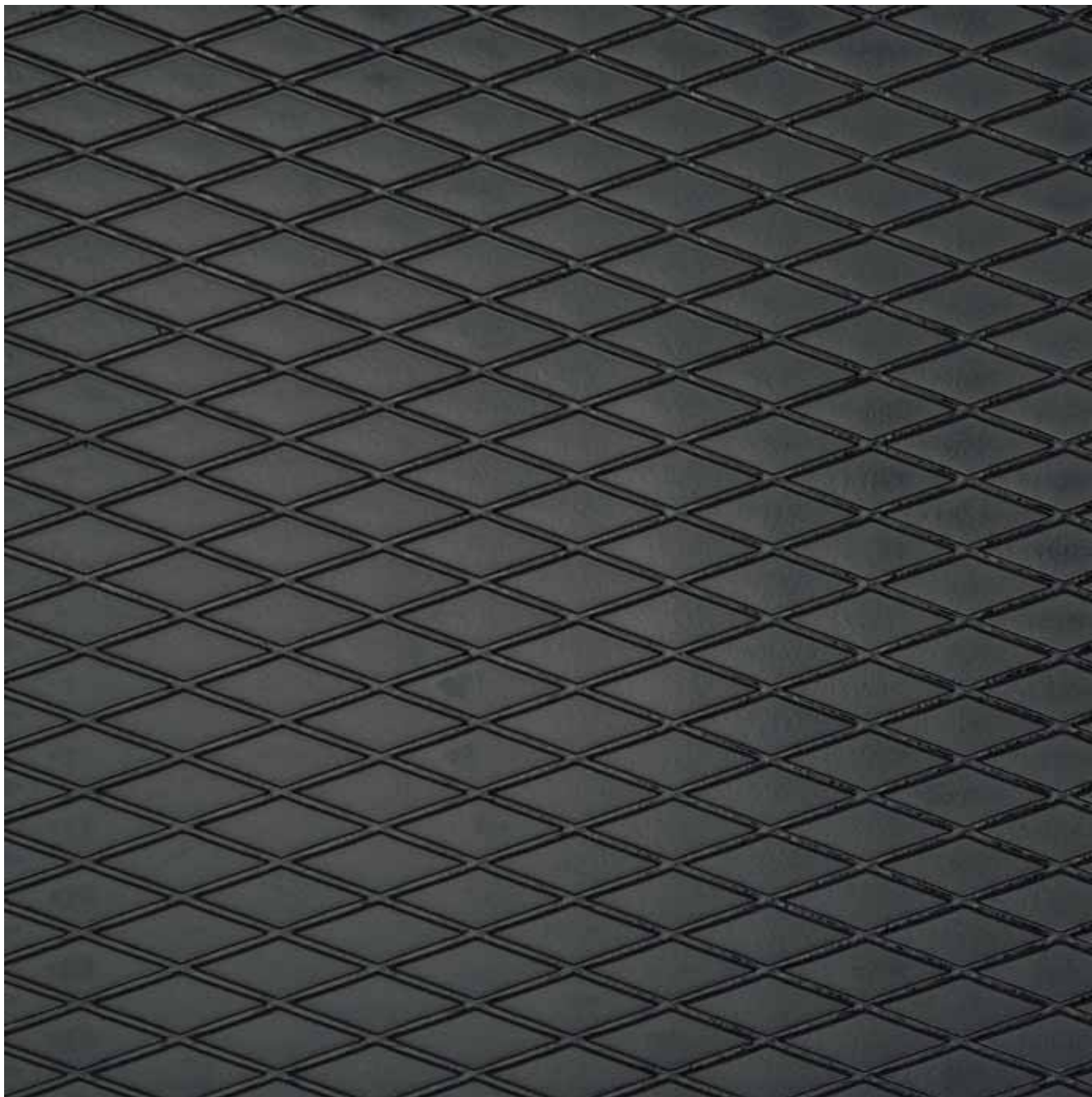


Matt sizes		
Width	mm	2.000 / 3.000
Length	mm	up to 50.000
Mat thickness	ca. mm	2
Tolerances		+ ca. 1 %
Weight	ca. kg/m <sup>2</sup>	1,5
Shore hardness A		70
Temperature resistance	°C	0-60
Supplied as		Rolls
Cut sizes		adjustable in length

# 579549 NOEliner Rhombus small



Antislip in accordance with DIN 51130 R 11



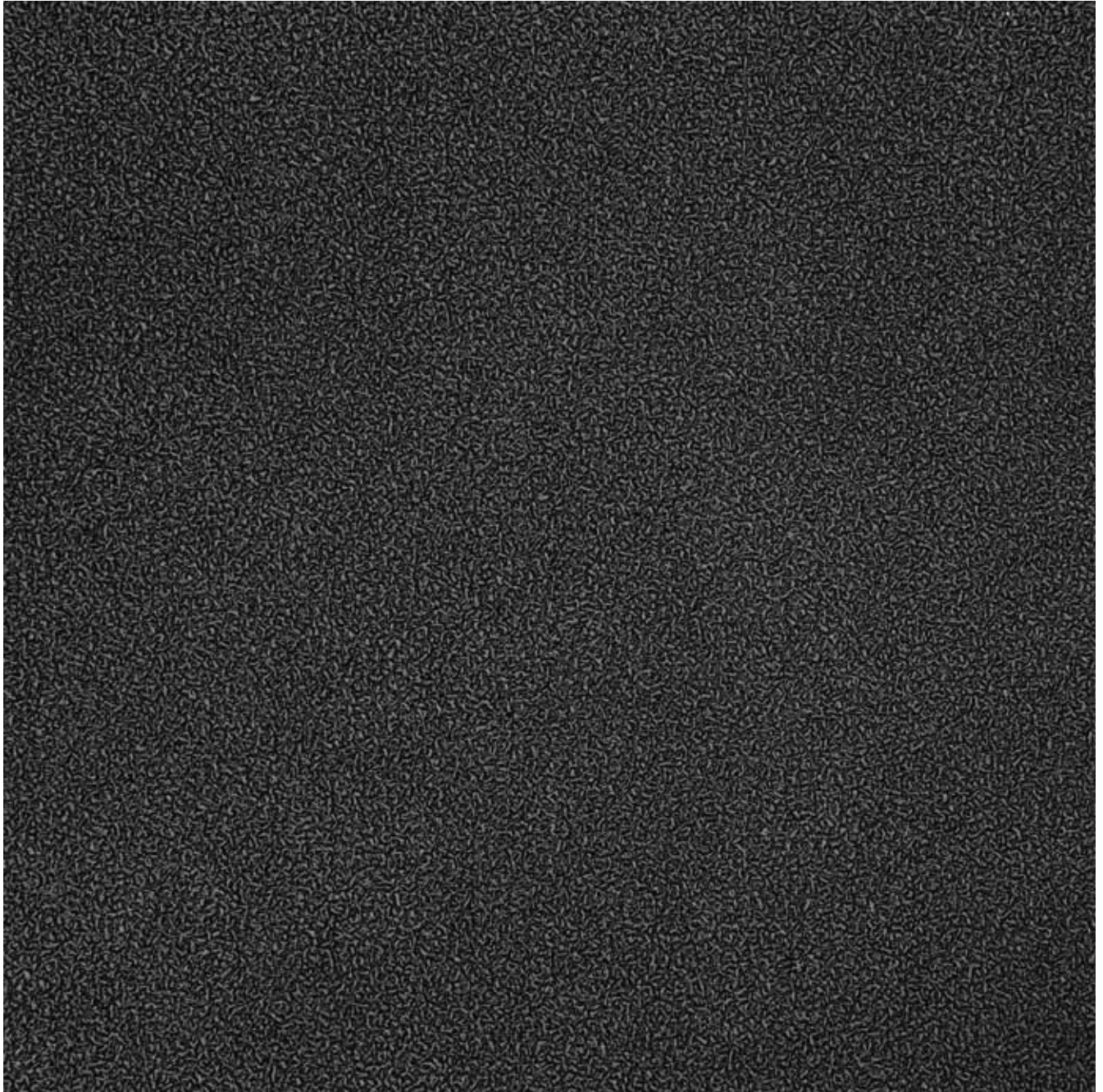
Matt sizes		
Width	mm	2.000 / 3.000
Length	mm	up to 50.000
Mat thickness	ca. mm	2
Tolerances		+ ca. 1 %
Weight	ca. kg/m <sup>2</sup>	1,5
Shore hardness A		70
Temperature resistance	°C	0-60
Supplied as		Rolls
Cut sizes		adjustable in length



# 579527 NOEliner Sand



Antislip in accordance with DIN 51130 R 13



Matt sizes		
Width	mm	2.000 / 3.000
Length	mm	up to 50.000
Mat thickness	ca. mm	2
Tolerances		+ ca. 1 %
Weight	ca. kg/m <sup>2</sup>	1,5
Shore hardness A		70
Temperature resistance	°C	0-60
Supplied as		Rolls
Cut sizes		adjustable in length

## 579509 NOEliner Smooth

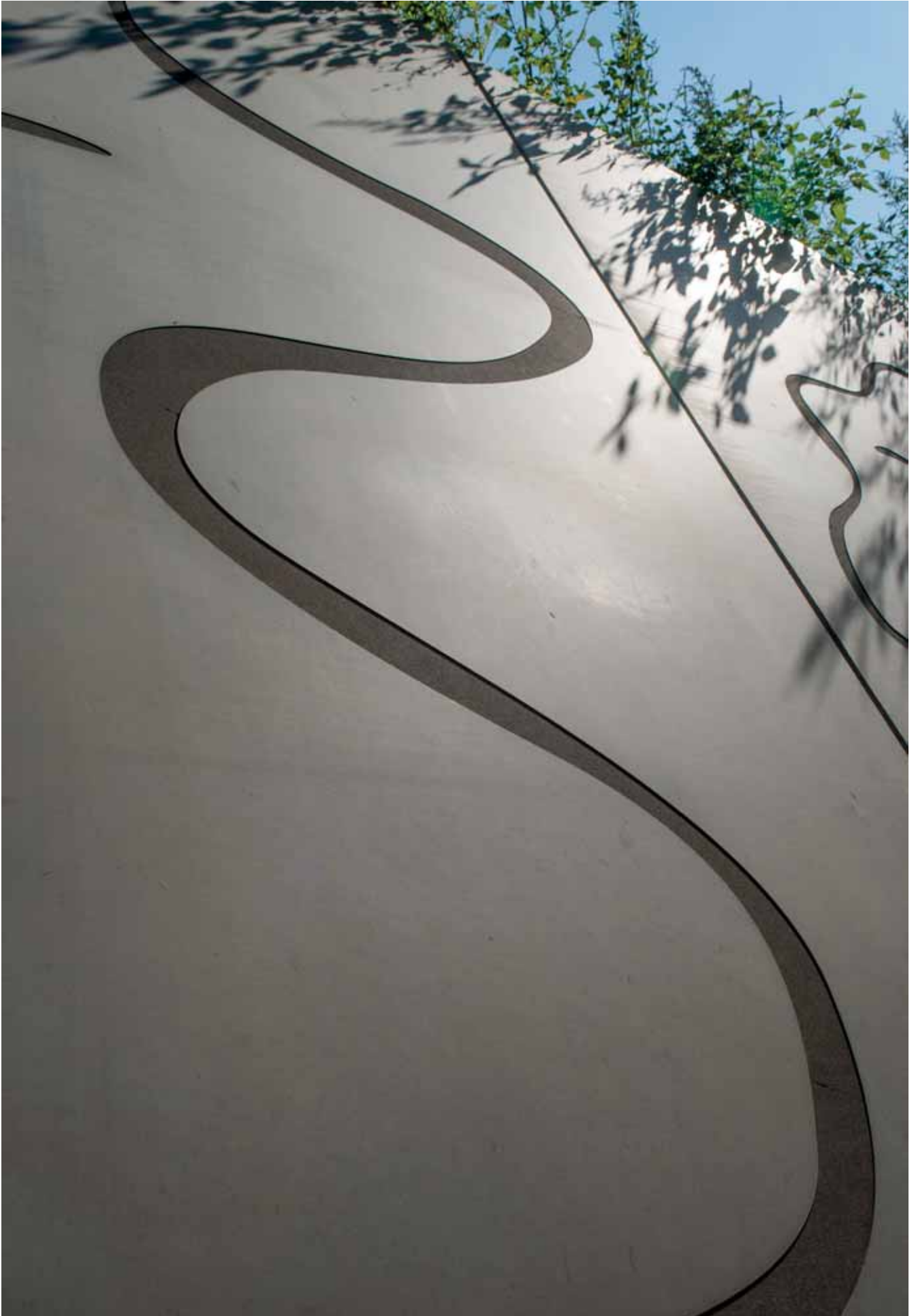
579509 NOEliner Smooth

<b>Mat sizes</b>		
Width	mm	3.000
Length	mm	up to 50.000
Mat thickness	ca. mm	2
<b>Tolerances</b>		+ ca. 1%
Weight	ca. kg/m <sup>2</sup>	1,5
Shore hardness A		70
Temperature resistance	°C	0–60
Supplied as		Rollenware
Cut sizes		adjustable in length

## 579519 NOEliner Matt

579519 NOEliner Matt

<b>Mattengröße</b>		
Width	mm	3.000
Length	mm	up to 50.000
Mat thickness	ca. mm	2
<b>Tolerances</b>		+ ca. 1%
Weight	ca. kg/m <sup>2</sup>	1,5
Shore hardness A		70
Temperature resistance	°C	0–60
Supplied as		Rollenware
Cut sizes		adjustable in length





## NOE Betongestaltung GmbH

Kuntzestr. 72  
73079 Süssen  
Germany  
T +49 7162 13-1  
noeplast@noe.de  
www.noe.eu

### **Belgium**

NOE-Bekistingtechniek N.V.  
www.noe.eu  
info@noe.be

### **France**

NOE-France  
www.noe.eu  
info@noefrance.fr

### **Netherlands**

NOE-Bekistingtechniek b.v.  
www.noe.eu  
info@noe.nl

### **Austria**

NOE-Schaltechnik  
www.noe.eu  
noe@noe-schaltechnik.at

### **Poland**

NOE-PL Sp. Zo.o.  
www.noe.pl  
noe@noe.pl

### **Suisse**

NOE-Schaltechnik  
www.noe.eu  
info@noe.ch