



# Product Overview





# **NOE-Schaltechnik**

## Your concrete, our mission

**When NOE developed the steel frame formwork panel over 70 years ago, it made a lasting change to building with concrete. Today, these panel are standard world-wide in modern concrete construction on building sites everywhere.**

NOE-Schaltechnik has been fulfilling all concrete construction requirements with economic, innovative and tailor-made formwork systems since 1957.

We are your competent partner for reliable planning of the construction process, optimization of logistics and the most efficient use of formwork and personnel. We are always available to advise our customers.

Only by working together can we achieve the best possible results.

### **The advantages**

---

→ **Manufacturing formwork since 1957**

---

→ **For hire or purchase**

---

→ **Formwork and textured formliners all from the same supplier**

---

# A revolution in formwork NOEtop4



Demands have changed, particularly in larger construction projects. Now building is about short construction times and high efficiency achieved with less labour. The moment has come for a revolution in formwork technology – and for the new formwork system NOEtop4.



### 01 Safe

Self-locking scaffold brackets for the highest workplace safety and rapid installation.



### 04 Releasable

Fixed bearing for one-sided tie rod installation in the first-face formwork.



### 02 Durable

Panels with strengthened corner castings for damage-free setting up, adjustment and release.



### 05 Ergonomic

Heavy-duty fastenings for bracing attached by only one person.



### 03 Stands tall

Panel dimensions that meet new demands for height encountered not only in residential buildings.

## The advantages of NOEtop4

- Rapid assembly
- Easy disassembly
- Low wear
- Environmentally friendly material use
- Less associated work
- Modern panel sizes
- High workplace safety

# NOEtop

## A well-conceived system

Compatible and simple





### 01 Perfect compatibility

Whether it is NOEtop, NOEtop4 or NOEtop Alu, our products are optimally matched to one another.



### 02 Ideal for large-scale construction projects

NOEtop XXL panels provide an impressive formwork surface of up to 14.05 m<sup>2</sup> in area.



### 03 Various fastening possibilities

With freely selectable tie rod positions. The standardised, conveniently positioned transverse ribs provide various options for fastening the panels or suspending equipment.



### 04 Outstanding concrete quality

The facings with NOEtop are screwed on from the back, which ensures a perfect exposed concrete appearance.



### 05 Ergonomic

NOEtop systems are notable for their strengthened corner castings with a material thickness of 3.5 mm and a load-carrying capacity of up to 88 kN/m<sup>2</sup> concrete pressure.

## Direct advantages

- Smooth site workflow using standardised accessories
- Efficient forming of large surfaces thanks to a formwork area of up to 14.05 m<sup>2</sup>
- No rivet imprints on the concrete surface
- Well-conceived modular height and width dimensions
- The panel joint pattern always remains regular
- Impressive load-carrying capacity of up to 88 kN/m<sup>2</sup>

# Safe and flexible NOEtop S







### 01 Usable Europe-wide

NOEtop S was especially designed for the high European safety standards on construction sites.



### 03 All-round safety

Continuous anti-fall protection from working platforms with rails on all sides.



### 02 Quick

No disassembly is required for transport to the next site.



### 04 Compatible

Ladder access and integrated stabilizers are attached directly to NOEtop panels.

## Direct advantages

- Maximum safety for site operatives
- Time savings from easy and safe installation
- Flexible positioning at horizontally running profiles



# Simple and quick

## Our stripping corners



### Direct advantages

- Former can be moved in one piece and reused
- Allowable concrete pressure up to 88 kN/m<sup>2</sup> for maximum strength
- Operated from inside and outside, also with projecting reinforcement

# Single-sided formwork

## Support bracket



### Direct advantages

---

- Quick and efficient erection
  - Modular system for working heights up to 10.00 m
  - Extended system upwards with only one tool (formwork hammer)
- 



# Systemised manual formwork



## Advantages of NOEalu L

---

- Lightweight compared to other manual formwork systems
- Cost-effective
- Specially designed for difficult-to-access building sites



## Advantages of NOEtop Alu

---

- Concrete surfaces free of rivet marks
- Ease of connection using NOEtop
- Light and strong





### 01 Lightweight

The ideal solution for sites without a crane. The lightweight panels allow almost all formwork elements to be moved by hand.



### 02 Durable

The robust cast corners not only ensure excellent strength, they also make handling easier.



### 03 Strong

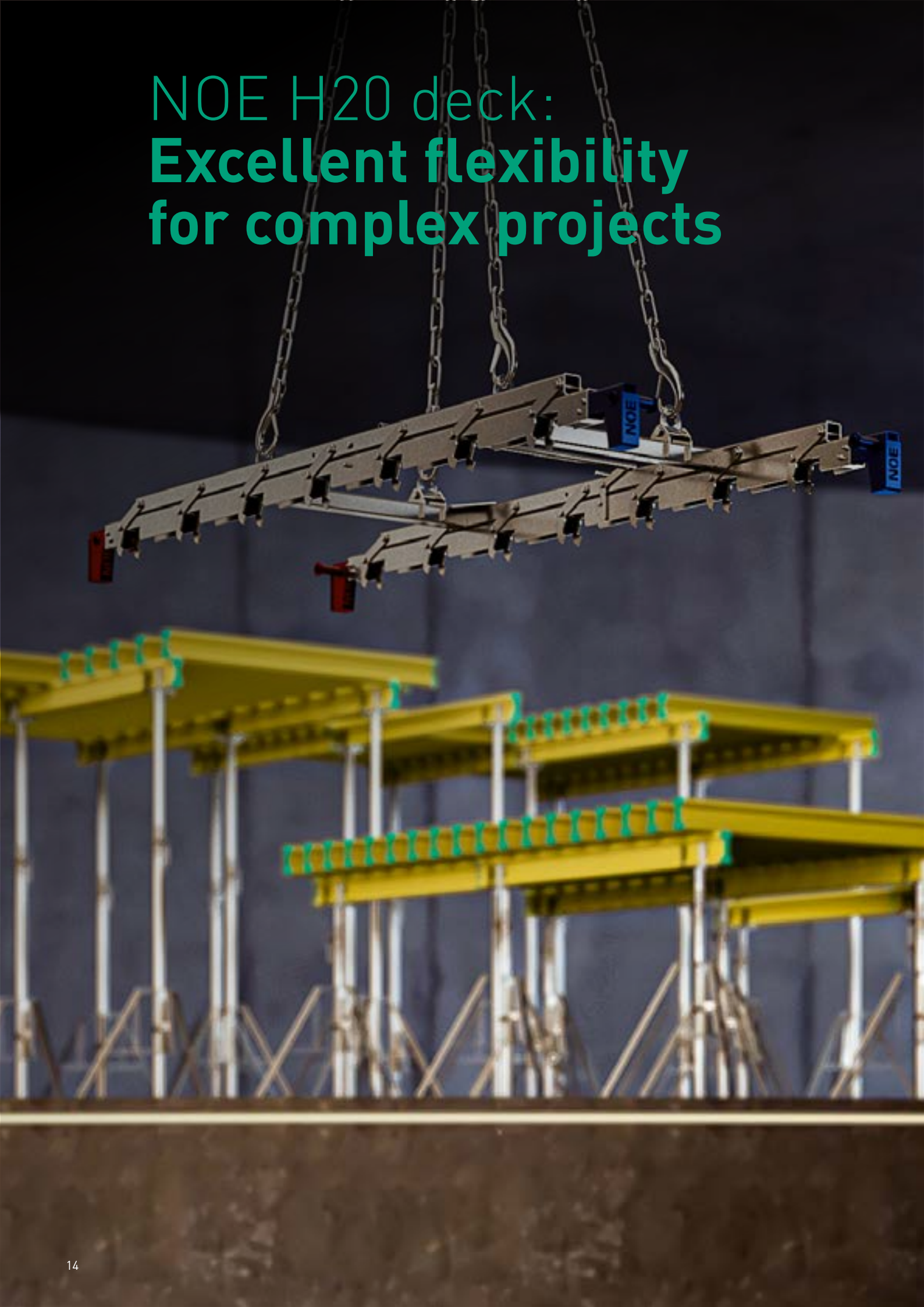
Concrete pressures up to  $60 \text{ kN/m}^2$ ! Our manual formwork can almost match the strength of large steel-frame panels.



### 04 Versatile

Panel dimensions that lead to the right solution in almost every situation, no matter how tricky.

# NOE H20 deck: **Excellent flexibility for complex projects**





### 01 Flexible

NOE H20 deck formwork is noted for its flexibility, particularly on complex building projects with convoluted floor plans.



### 02 Complementary to NOEdeck and NOEtable

Combines seamlessly with other systems such as NOEdeck and NOEtable.

## Direct advantages of H20 deck

---

- Low-cost
- Easy and straightforward
- Combines seamlessly with other systems such as NOEdeck and NOEtable
- For complicated floor plans



### 03 Quicker with the H20 lifter

The NOE H20 lifter allows several facing support beams to be lifted into position at the same time in one operation. This considerably reduces the number of steps in the deck erection process.



### 04 Integrated workplace safety with the H20 lifter

The distance between the beams is less than 30 cm, which allows the facing to be conveniently placed and fixed from above. The lifter also fulfils the requirements of DGUV Rule 101-014.

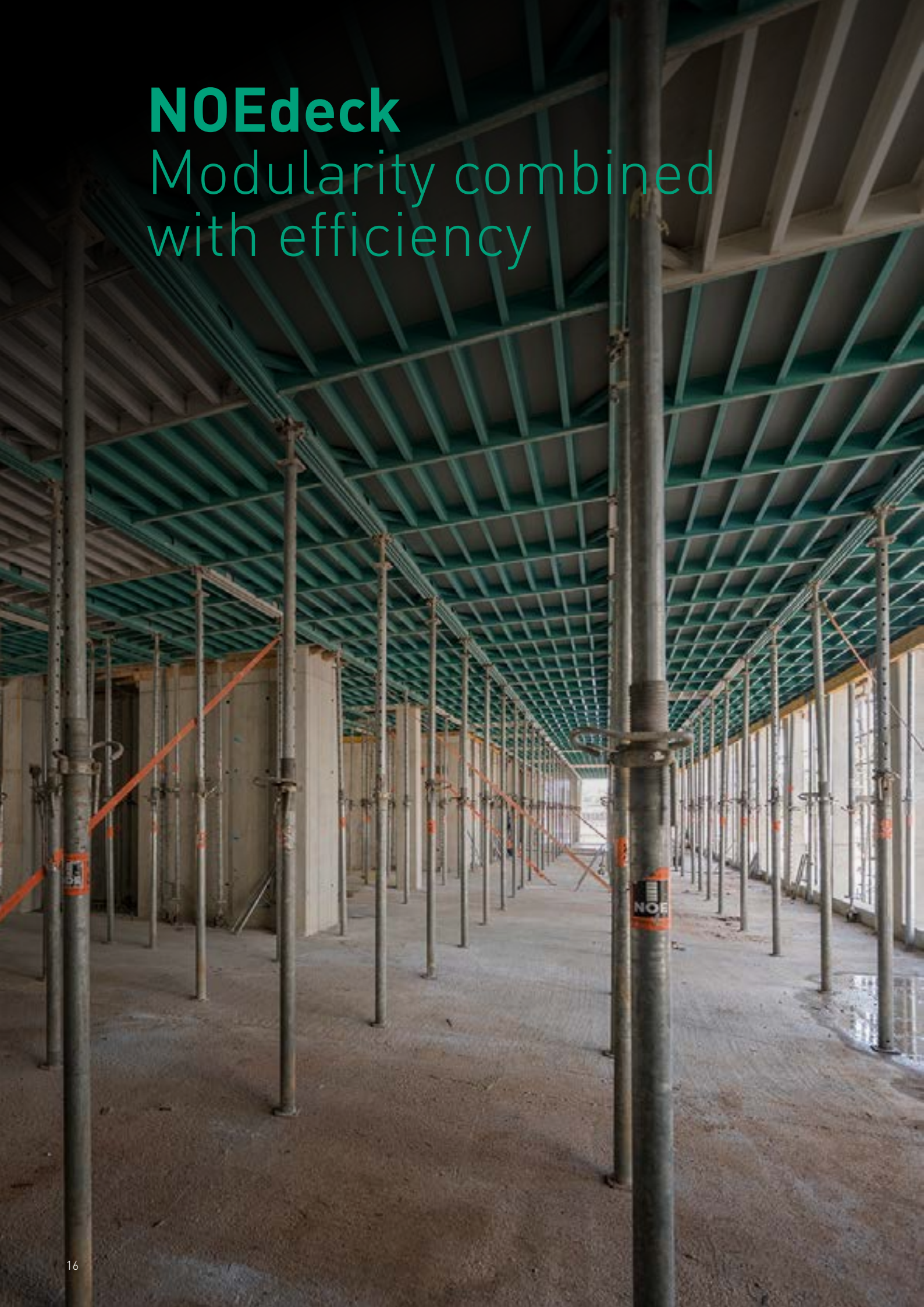
## Direct advantages of H20 lifter

---

- Improved workplace safety
- Clear time-savings compared to conventional methods
- Simple operation enables problem-free integration into the workflow on site

# NOEdeck

Modularity combined  
with efficiency







### 01 Early stripping

Thanks to the dropheads integrated into the system, early stripping does not present any problem.



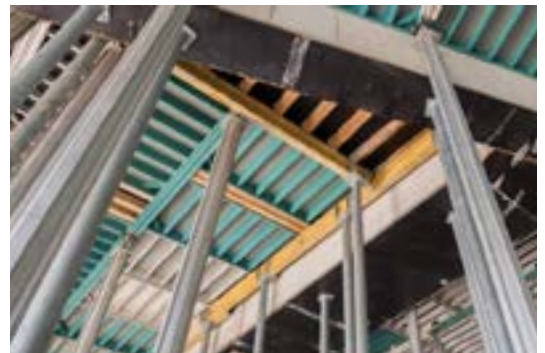
### 02 Quick

Only 1.6 components required for each m<sup>2</sup> of formwork. This considerably reduces completion time.



### 03 Less physical effort

All system components are manufactured out of aluminium to reduce the physical demands on site operatives.



### 04 Grid-independent design

The grid-independent design makes changes in direction of the longitudinal beams no problem.

## Direct advantages

- Preset modularity eliminates risk of error
- Formwork panels and longitudinal beams can be stripped very early and are immediately ready for reuse
- Fewer components mean an easier installation process
- Deck slabs up to 80 cm thick are no problem

# **NOEtable** **Immediate reuse**

Your go-to solution  
for large formwork areas





### 01 Versatile

Working and safety scaffolds can be integrated into the deck tables, as can edge beams.



### 02 Quick

With a panel area of 12.5 m<sup>2</sup> per table, installing formwork for large areas could not be easier.



### 03 Less physical effort

Ease of handling and a well-conceived design minimise construction site risks.



### 04 Installation-ready

NOEtable deck tables are delivered to site ready for immediate installation, which results in considerable time savings.

## Direct advantages

- Ready for immediate use
- Well-conceived design reduces accident risks
- Easily transferred between storey floors with a crane fork
- Rapid form placement for large areas with a 12.5 m<sup>2</sup> table size

# N0Eprop: Lightweight and high load capacity





### 01 Compatible

NOEprop is not only a stand-alone load-bearing scaffold system; it is also a basic system for all deck systems.



### 03 Occupational health and safety benefits

Ease of handling and a well-conceived design minimise construction site risks.



### 02 Strong and lightweight

NOEprop load-bearing scaffold systems are remarkable for their low self-weight and high load capacity of up to 160 kN per prop.



### 04 Flexibility

The support frames, which can be fitted horizontally or vertically, facilitate flexible configuration of the load-bearing scaffold system, enabling it to be configured to suit your site's specific requirements.

## Direct advantages

---

→ Saves labour

---

→ Heights up to 15.2 m

---

→ High load capacity

# NOE AB 300

Practical and safe





### 01 Ready for immediate use

The NOE AB 300 is delivered to site ready for use. Just unfold and that's it.



### 02 Great heights

Usable on heights up to 100 m. Formwork heights up to 5.30 m.



### 03 Stable and safe

Designed for strength and stability, the AB 300 is made for working at great heights.



### 04 Quicker

The AB 300 impresses with its 2 m working width for operational efficiency in a safe environment.

## Direct advantages

- Scaffold width 2 m
- High load capacity
- Freely positionable
- Delivered to site ready for use
- Self-locking suspension hooks
- Suspension options suitable for every application

# Safe with the hinged walkway bracket scaffold







### 01 Ready for immediate use

The hinged walkway bracket scaffold is ready for immediate use.



### 03 Cost-effective

Optimum price-performance ratio.



### 02 Flexible

Adjustable to any building thanks to different widths and corner details.



### 04 Versatile

Can be used as a working scaffold or a climbing scaffold with formwork heights up to 3.31 m.

## Direct advantages

---

→ Value for money

---

→ Safe

---

→ Quick

---

→ Flexible

# NOEtop FS Columns

Foldable  
column formwork





### 01 Tie rod-free

NOEtop FS allows columns to be efficiently concreted without tie rods, which makes the task much less complicated.



### 02 Quick and easy

Being a “one-piece” unit that folds out/folds in again and is flexibly adjusted for height, NOEtop FS is quick and easy to handle, which saves time and effort when erecting or removing formwork.



### 03 Individually adjustable

With column cross sections of 200 to 600 mm and 50 mm increments, NOEtop FS provides maximum flexibility.



### 04 Safety is built-in

With its integrated working platforms and access ladder with safety cage, NOEtop FS provides an excellent standard of safety on site.

## Direct advantages

---

→ Available in different heights (3500, 2750, 1250 and 600 mm)

---

→ Higher efficiency from having no tie bars

---

→ Time-saving “one-piece” erection and removal

---

→ Fully galvanised formwork (frames and facing) for long life

# Vario 2000

Compatible and simple





### 01 Infinitely adjustable cross section

Infinitely adjustable cross sections from 150 x 150 mm to 600 x 600 mm, which can be enlarged up to 1500 mm if necessary.



### 02 Perfect exposed concrete

All facings are screwed on from behind. With or without triangular chamfer strips.



### 03 Robust and durable

The hot dip galvanised steel frames are highly robust and durable, even under challenging conditions.



### 04 Rapid assembly

Installation of the formwork facing and elements is quick and straightforward. On request, Vario 2000 can be supplied fully assembled and ready for installation on site.

## Direct advantages

→ Strong

→ Formwork heights for optimal adjustment:  
3000, 2750, 2500, 1000, 500 mm

→ Quick and straightforward

→ Variably adjustable cross sections

# Boundless creativity with NOEplast



Formliner "Gabion" Design by: Joel CHIRINO, SPIELMANN & CHIRINO Architectures



### 01 Infinite creativity

A wide and varied range offers infinite design freedom and possibilities for combination.



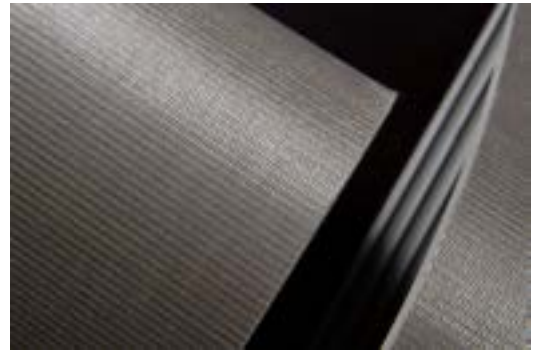
### 02 Aesthetic and functional

For many applications such as anti-slip floors, flood and noise protection walls.



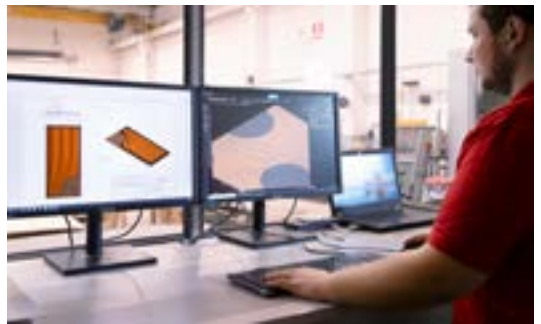
### 03 High design freedom

Accurately detailed reproduction, even with filigree patterns.



### 04 Durable

The special backing fabric and high temperature resistance (up to 80 °C) guarantee a large number of reuses of the formliners.



### 05 Efficient

Comprehensive support of your project: from pre-attaching the formliners to carrier boards right up to complete project planning.

## Direct advantages

- Durability and resistance against external influences
- Technical support from formwork and formliner experts
- Immediate use with no further installation work
- Guaranteed high numbers of uses
- Customisable to the client's requirements and wishes
- Additional functions such as anti-slip and noise protection

**NOE-Schaltechnik****Georg Meyer-Keller GmbH + Co. KG**

Kuntzestr. 72  
73079 Süssen, Germany  
Tel. +49 7162 13-1  
info@noe.de  
www.noe.eu

**Belgium**

NOE-Bekistingtechniek N.V.  
Leuvensesteenweg 613  
1930 Zaventem, Belgium  
info@noe.be  
www.noe.eu

**France**

NOE-France  
Depot Central  
7 rue Maurice Bellonte  
02100 Saint Quentin, France  
info@noefrance.fr  
www.noe.eu

**Netherlands**

NOE-Bekistingtechniek b.v  
Postbus 25  
4240 CA ARKEL, Netherlands  
info@noe.nl  
www.noe.eu

**Austria**

NOE-Schaltechnik GmbH & Co KG  
Trientlgasse 25  
6020 Innsbruck, Austria  
noe@noe-schaltechnik.at  
www.noe.eu

**Poland**

NOE-PL Sp. z.o.o.  
ul. Jezioraki 84  
02-863 Warszawa, Poland  
noe@noe.pl  
www.noe.pl

**Switzerland**

NOE-Schaltechnik GmbH  
Nordingstrasse 28  
4702 Oensingen, Switzerland  
info@noe.ch  
www.noe.eu