



THE FORMWORK

# NOE<sup>®</sup>alu L

Innovative, ingenious, economical





# NOEalu L – ingenious and innovative



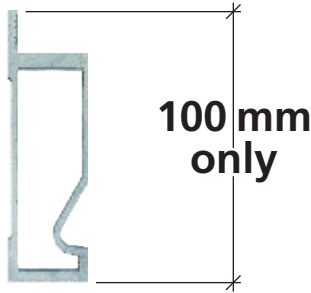
## Robust

Robust aluminium frame with corner casting with lever edge for durability in use.



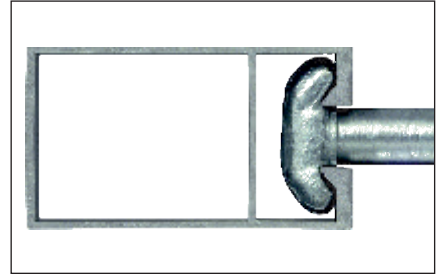
## Slim

Frame depth 100 mm only reducing transportation volume and cost.



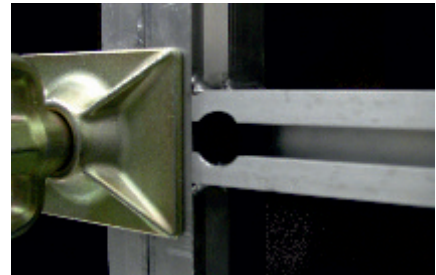
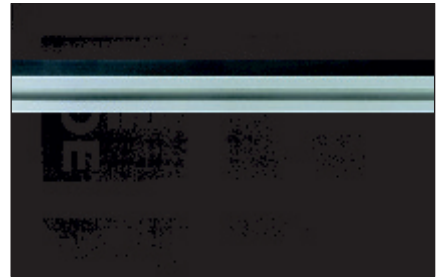
## Easy

Fixing of accessories to any point of the aluminium cross ribs.



## Unique

Tubular aluminium cross ribs provided with continuous T-Lips for locating T-Head bolts.



## Practical

Inserted ties sleeve integrating facing plug for easy and safe guidance of tie bars.

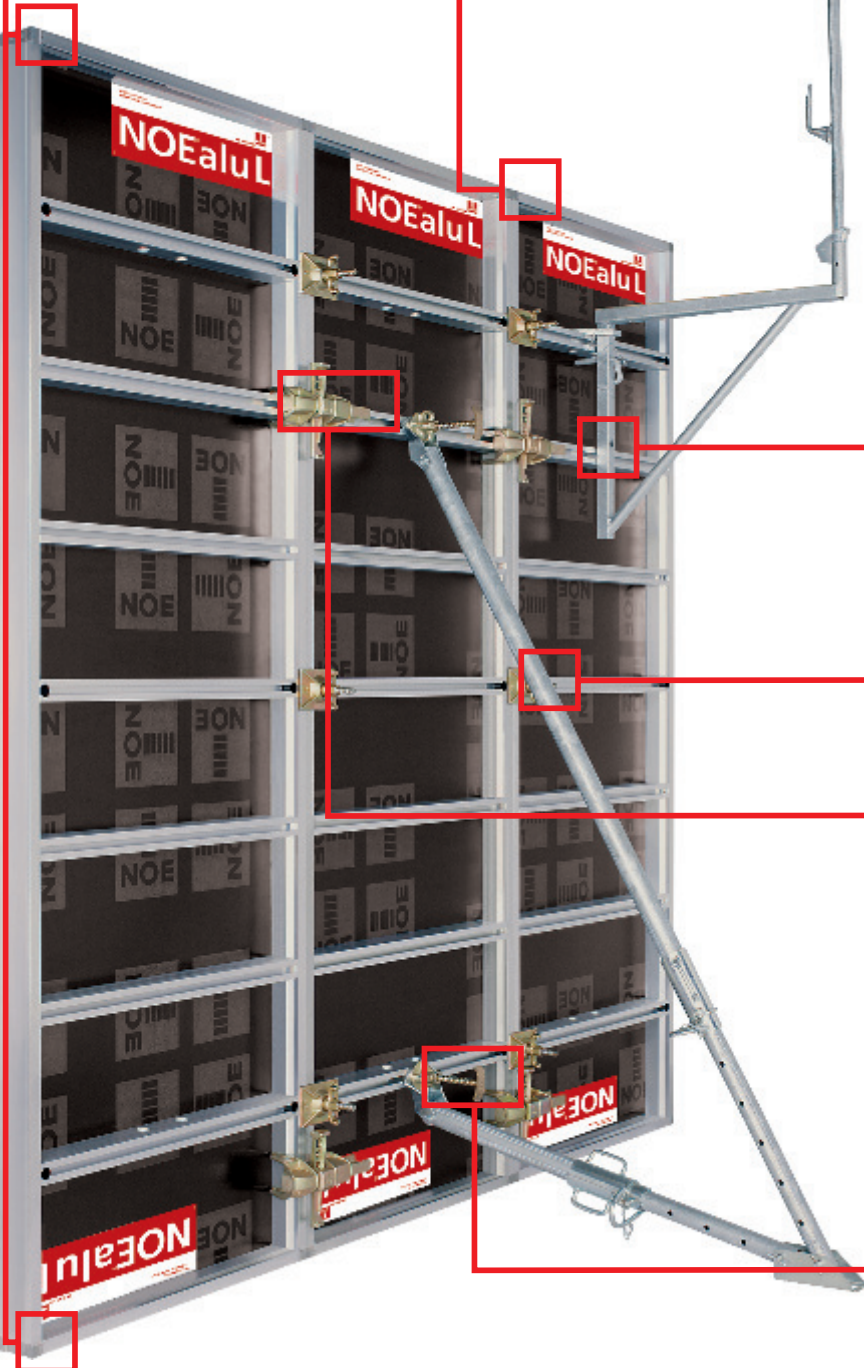
## Fast

Fast, tight, stiff and aligned panel connection using Alulock universal clamp with vertical wedge.



## Fast

T-head bolt with captive nut for fixing of accessories at random to the cross ribs.



# NOEalu XL – Large panel offering larger formwork area up to 5,50 m<sup>2</sup>



## Safe

Tubes inserted into the cross ribs for a safe location of walkway brackets.



## Light

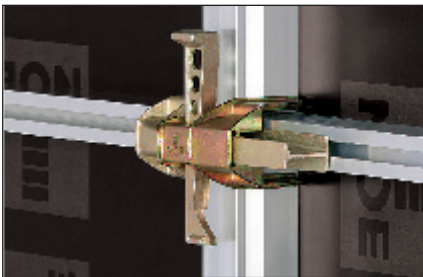
Panel weight of less than 20 kg/m<sup>2</sup>.

## Strong

Admissible concrete pressure up to 60 kN/m<sup>2</sup>.

## Universal

Alulock – Universal clamp for tight, stiff and aligned panel connections accepting fillers up to 100 mm. One clamp only for panel connections and panel extension.



## Panel sizes

Panel widths:  
2000; 900; 750; 600; 550; 500;  
450; 400; 300 mm

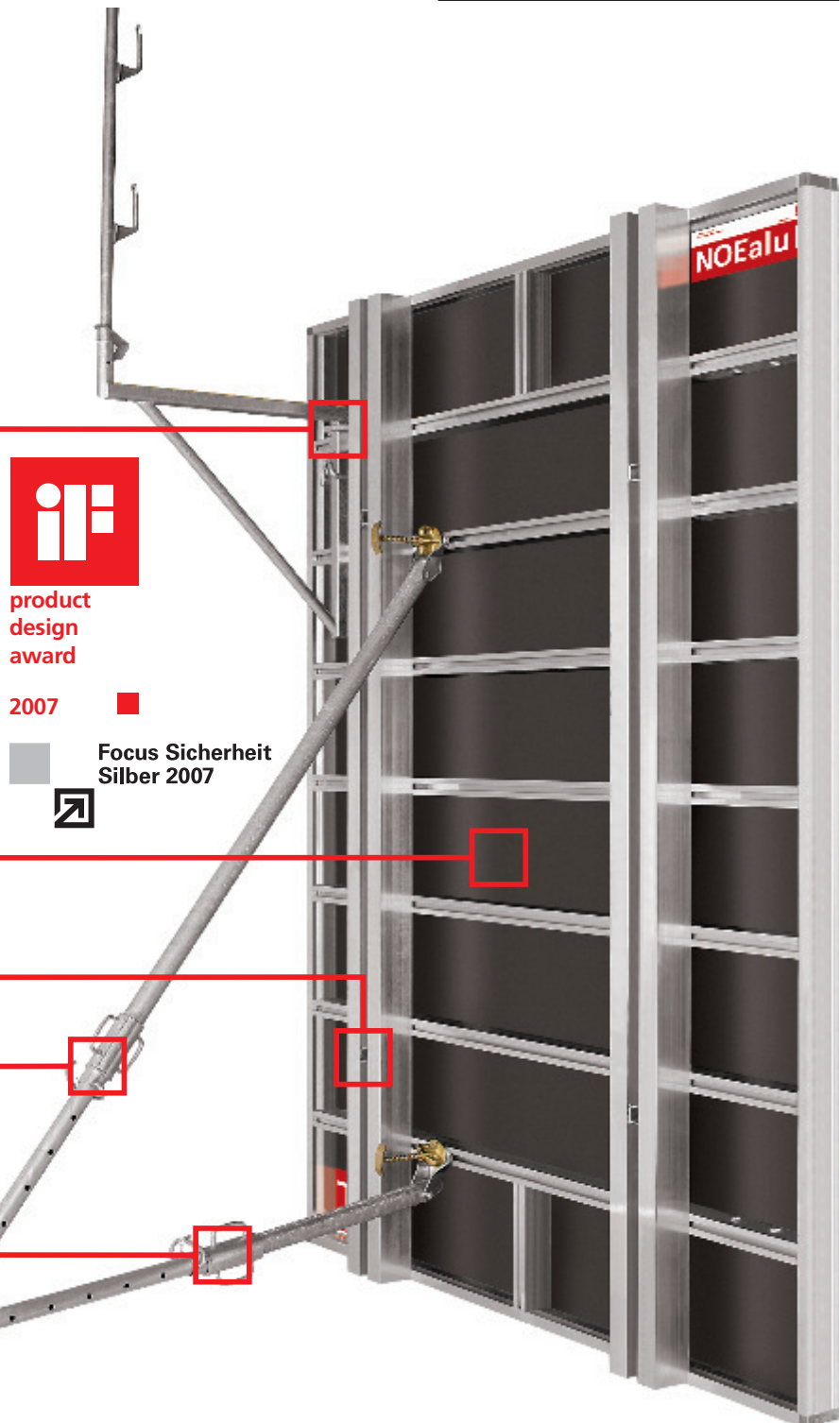
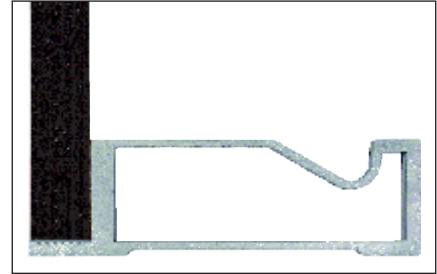
Internal corner  
300 x 300 mm

Panel heights:  
3000; 2750; 1500; 900 mm

Foundation panel:  
Panel width: 900 mm  
Panel height: 1250 mm

## High-performance

15 mm NOEform facing embedded in stiff and robust aluminium frame for optimum concrete results.



product  
design  
award

2007

Focus Sicherheit  
Silber 2007



## NOEalu XL

Growing with your projects  
NOEalu XL large panels offer:  
2,00 x 2,75 m = 5,50 m<sup>2</sup> formwork area,  
2,00 x 1,50 m = 3,00 m<sup>2</sup> formwork area.

## Economical

Tubular aluminium strong-backs allowing  
4 ties only per XL panel.

## Telescopic

Telescopic push-pull stabilizers.



# NOEalu L – cuts the costs of forming foundations



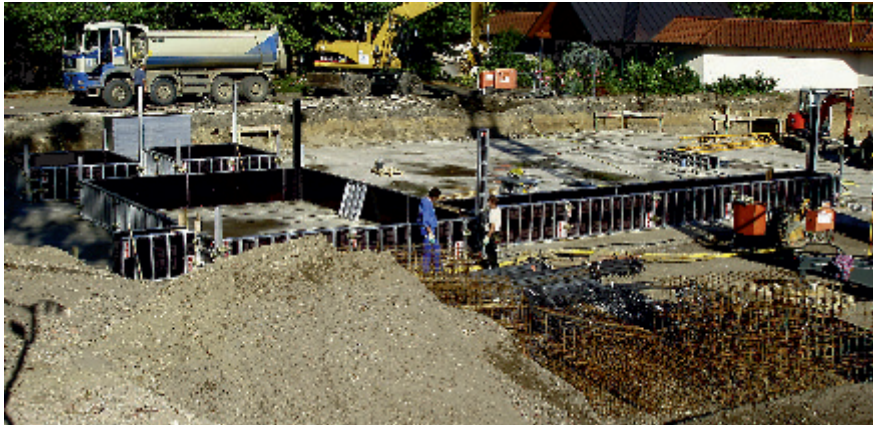
## Impressive

NOEalu L – foundation formwork impresses with its ease of use on all types of foundations.

## Large cost-savings

compared with conventional methods from reduced excavation and lack of need for additional stabilizers

The NOEalu L foundation panel 900 x 1250 mm makes formwork for foundations even more cost-effective.

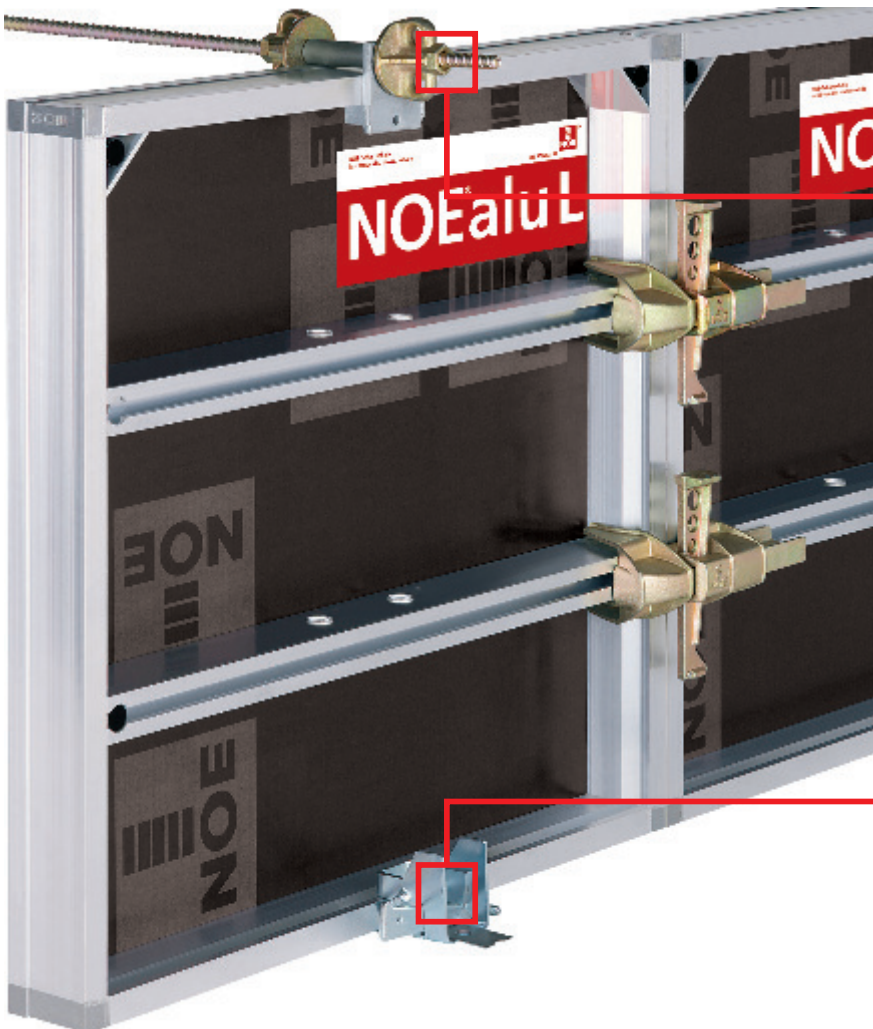


## Strong

Permissible tensile force in the strip-steel stressing device 12 kN.

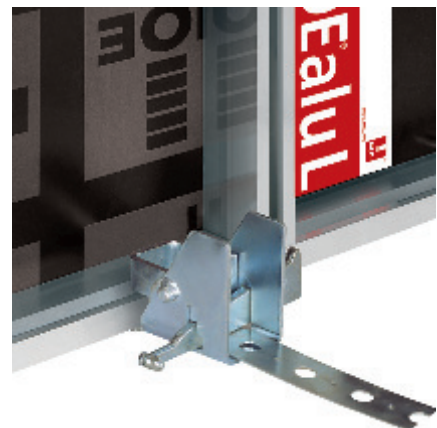
## Perfect flowing alignment

by nailing the strip-steel stressing device down to the blinding layer



## Tying without grid patterns

by using tying claws above the formwork.

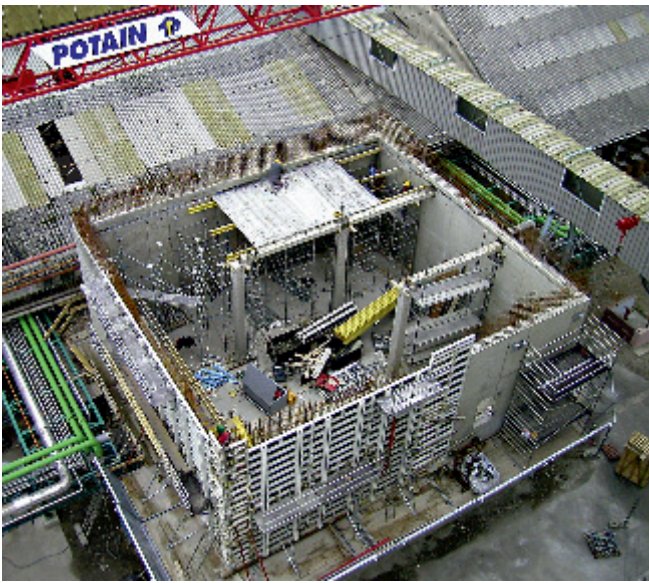


## Sophisticated solution

The foundation clamp firmly connects the strip-steel stressing device with a tension-resisting connection to the panel and acts as the bottom tie.



# NOEalu L – toekomstgericht investeren







**THE FORMWORK**



## **NOE-Schaltechnik Georg Meyer-Keller GmbH + Co. KG**

Kuntzestr. 72, 73079 Suessen, Germany  
T + 49 7162 13-1  
F + 49 7162 13-288  
info@noe.de  
www.noe.de  
www.noeplast.com

### **Austria**

NOE Schaltechnik  
www.noe-schaltechnik.at  
noe@noe-schaltechnik.at

### **Belgium**

NOE Bekistingtechniek N.V.  
www.noe.be  
info@noe.be

### **Brazil**

Mills do Brasil  
Estruturas e Serviços Ltda.  
www.mills.com.br  
millsbr@cepa.com.br

### **Bulgaria**

NOE Schaltechnik  
www.noebg.com  
noe-bg@netbg.com

### **Croatia**

NOE oplatna tehnika d.o.o.  
www.noe.hr  
noe@noe.hr

### **France**

NOE France  
www.noe-france.fr  
info@noe-france.fr

### **Netherlands**

NOE Bekistingtechniek b.v.  
www.noe.nl  
info@noe.nl

### **Poland**

NOE PL Sp Zo.o.  
www.noe.com.pl  
noe@noe.com.pl

### **Russia**

NOE Moscow  
info@noe-moscow.ru

NOE St. Petersburg  
noe@sovintel.ru

### **Saudi Arabia**

NOE Global Trade Est.  
NOE - The Formwork  
www.noe.de  
jeddah@noe.de

### **Serbia**

NOE Sistemske Oplate d.o.o.  
www.noe-scg.com  
noe-scg@eunet.rs

### **Switzerland**

NOE Schaltechnik  
www.noe.ch  
info@noe.ch

### **Turkey**

NOE Beton Kalıpları A.Ş.  
www.noe.com.tr  
info@noe.com.tr